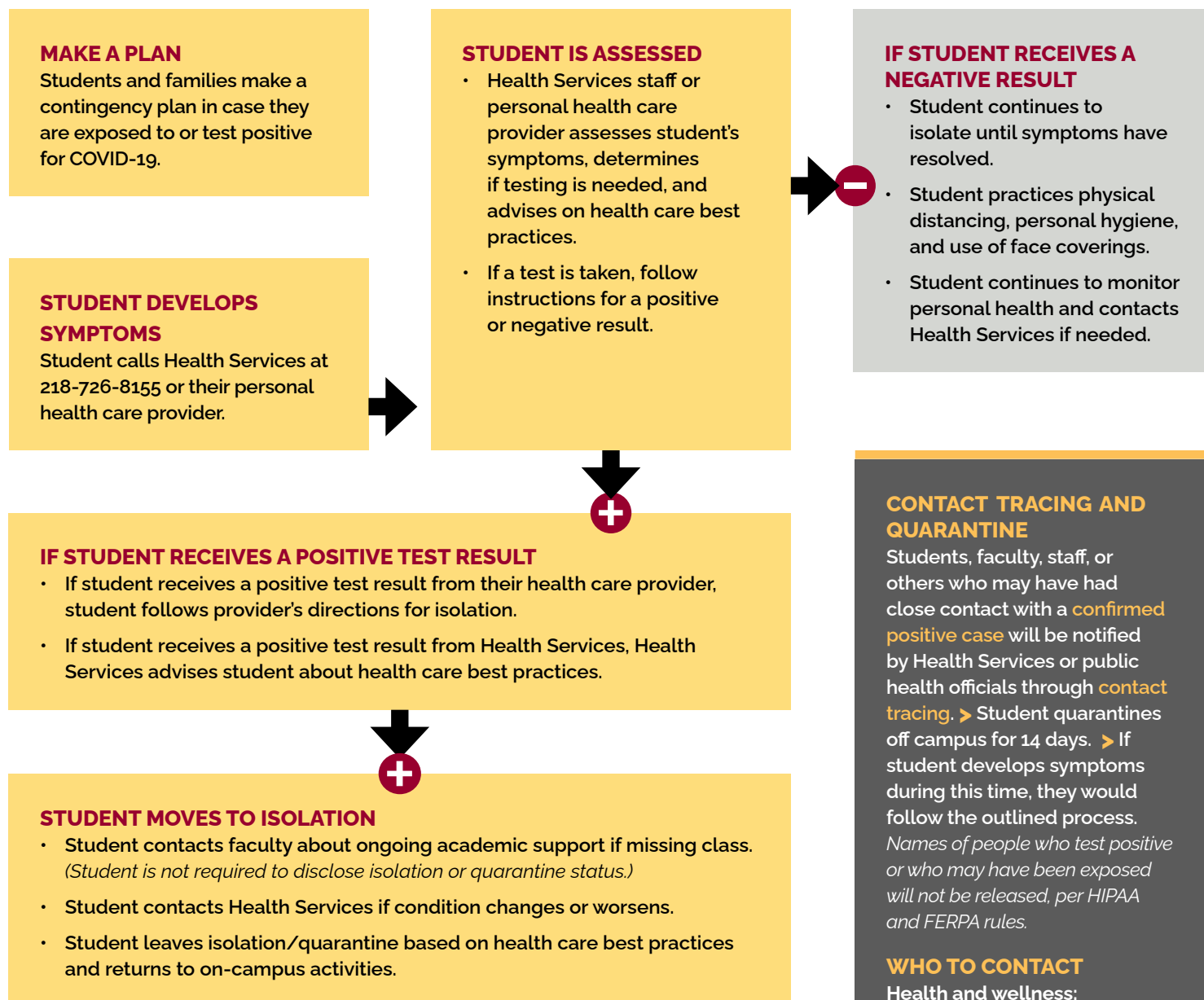


Students living off campus—steps to take with a confirmed or possible COVID-19 diagnosis

Off-campus housing is considered any privately rented apartments or houses near campus.



Case: Someone who has had a confirmed positive test for COVID-19.

Close contact: Spending at least 15 minutes or more while fewer than 6 feet from someone who has a confirmed case of COVID-19 disease.

Isolation: When someone has a confirmed case of the virus and is asked by local health authorities to stay in one place away from others for 10 days after symptoms first appear, has gone 24 hours without a fever, and symptoms improve.

Quarantine: When someone who has been in close contact with someone who is confirmed to have the virus stays in one place away from others for 14 days after close contact to avoid transmitting it to others.